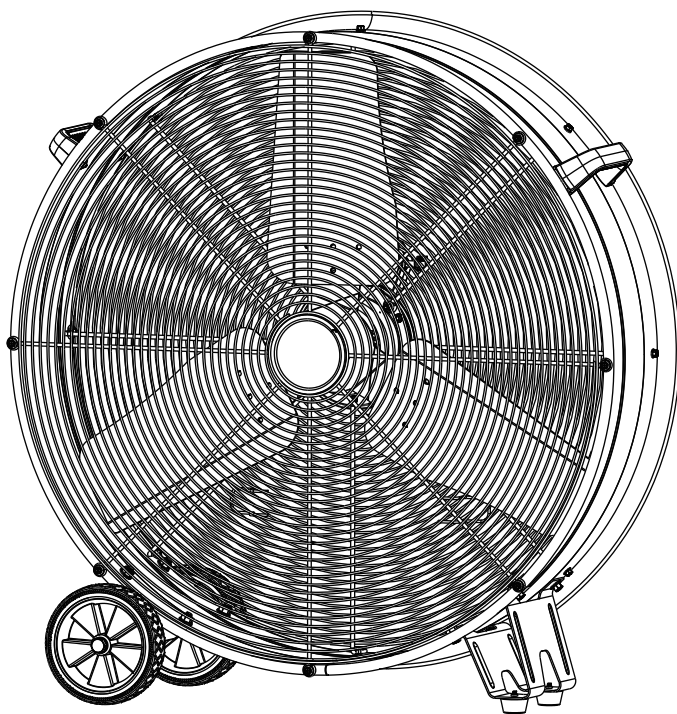


# SDF76

## 76 CM HIGH VELOCITY DRUM FAN

OWNER'S MANUAL



FOR YOUR SAFETY  
PLEASE READ THESE INSTRUCTIONS CAREFULLY  
AND RETAIN THEM FOR FUTURE USE.

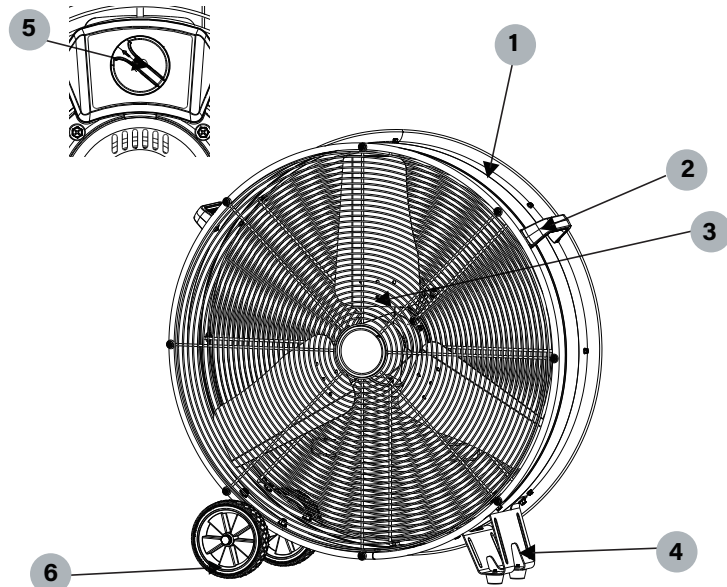


## PACKAGE CONTENTS

### DEFINITIONS: SAFETY ALERT SYMBOLS AND WORDS

This instruction manual uses the following safety alert symbols and words to alert people to hazardous situations and the risk of personal injury or property damage.

- ⚠ DANGER:** Indicates an imminently hazardous situation which, if not avoided, will result in death or serious injury.
- ⚠ WARNING:** Indicates a potentially hazardous situation which, if not avoided, could result in death or serious injury.
- ⚠ CAUTION:** Indicates a potentially hazardous situation which, if not avoided, may result in minor or moderate injury.
- NOTICE:** Indicates a practice not related to personal injury which, if not avoided, may result in property damage.



- 1 Drum
- 2 Handle
- 3 Blade
- 4 Foot support
- 5 Power switch
- 6 Wheel

**⚠ WARNING:** Read all safety warnings and all instructions. Failure to follow the warnings and instructions may result in electric shock, fire and/or serious injury.

**⚠ WARNING:** To reduce the risk of injury, read the instruction manual.

## GENERAL SAFETY PRECAUTIONS

### IMPORTANT SAFETY INSTRUCTIONS

#### **⚠ WARNING:**

As with all electrical appliances, basic safety precautions should always be followed to reduce including the following precautions:

#### Read all the instructions before using this fan.

#### **⚠ WARNING:**

- Use this fan only as described in this manual. Any other use not recommended by the manufacturer may cause electric shock, fire or injury to persons.
- Do not operate the fan with a damaged power cord or after the fan malfunctions or has been dropped in any manner.
- Use of extreme caution is necessary when any fan is used by or near children, disabled persons or pets and whenever the fan is left operating unattended.
- Do not place the fan on a small, unlevel, uneven or any surface which might allow fan to tip or fall.
- For proper operation, fan should be placed on a smooth non-combustible, level surface.
- Always unplug fan when not in use, when moving from place to place, when assembling or disassembling parts, and before cleaning.
- The use of attachments that are not recommended or sold by the manufacturer may cause hazards.
- Do not use outdoors.
- Do not use fan in window. Rain may cause electrical hazard.
- Do not operate any fan with a damaged cord or plug. Discard fan or return to an authorized service facility for examination and/or repair.
- Do not run power cord under carpeting. Do not cover cord with throw rugs, runners or the like. Arrange cord away from traffic area where it will not be tripped over.
- Do not insert or allow any object to enter any openings on the fan. Doing so may cause electric shock and/or fire hazard. Avoid contact with moving parts.
- This appliance is not intended for use by persons (including children) with reduced physical, sensory or mental capabilities or lack of experience and knowledge, unless they have been given supervision or instruction concerning use of the appliance by a person responsible for their safety.
- Children should be supervised to ensure they do not play with the appliance.

### READ&SAVE THESE INSTRUCTIONS

#### **⚠ WARNING: Shock Hazard**

Use this fan only in dry environments. This fan is not intended for use in a bathroom, laundry area, or similar locations, or near sinks, washing machines, swimming pools or other sources of water. Never locate fan where it may fall into a bathtub or other water receptacle. Do not use in damp environments such as flooded basements.

#### **⚠ WARNING: Hot Surfaces**

Do not touch fan motor when in use. This motor is hot when in use, to avoid burns, do not let bare skin touch hot surfaces.

#### **⚠ WARNING: Fire Hazard**

Fans have arcing or sparking parts inside. Do not use near combustible materials or flammable gases or sources of heat. DO NOT USE in areas where gasoline, paint or flammable materials are used or stored. To prevent a possible fire, do not block air intakes or exhaust in any manner. Do not insert or allow foreign objects to enter any ventilation or exhaust opening as this may cause an electric shock, fire, or damage the fan.

#### **⚠ WARNING: Electrical Shock Hazard**

Do not use with damaged cord or plug. Use with adequate electrical system that is up to code.

#### **⚠ WARNING: To Prevent Electric Shock**

Improper connection of the equipment-grounding conductor can result in a risk of electric shock, check with a qualified electrician or service person if you are in doubt as to whether the outlet is properly grounded. Do not modify the plug provided with the appliance- if it will not fit the outlet, have a proper outlet installed by a qualified electrician.

#### **⚠ WARNING: To Reduce The Risk Of Electric Shock**

Do not use this product with any solid-state speed control device.

## PRODUCT SPECIFICATIONS&OPERATING INSTRUCTIONS

### PRODUCT SPECIFICATIONS

Model	SDF76
Power	220-240V~ / 50-60Hz / 290W
Speed	3
Weight	16.4 kg
Power Cord	H05VV-F, 3C*0.75mm <sup>2</sup> /3.6m

### FAN OPERATION

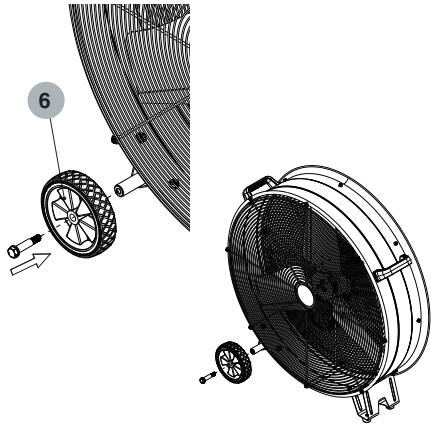
**WARNING:** Before assembling the fan, make sure all parts are present. Compare parts with contents list. If any part is missing or damaged, do not attempt to assemble, install, or operate the product. Contact customer service for replacement parts. Unplug fan before assembling any parts to it.

#### 1. Tools Required (Not Included):

Wrench

#### 2. Fan Cradle Assembly:

Simple assembly is required before using this fan.



- Thread the screw into the wheel (6), align the threaded hole of the axle, and tighten the screw.

**Fan Operation:** Always operate the fan in its upright position. The fan itself can be tilted into various positions depending on applications, including straight upward

**Fan Location:** Place the fan in an area in the room that will provide the most effective air circulation.

**Fan Connection:** Plug fan directly into 220-240 volt A.C., 50-60Hz wall outlet. Be sure plug fits tightly in outlet. A loose connection may cause overheating and damage to the plug or fan.

**NOTE:** To prevent overloading a circuit, do not plug the fan into a circuit that is servicing other electrical loads.

**Turning Fan On:** Place fan on stable level surface. Plug fan into properly grounded outlet. To start the fan, turn the switch from the OFF position to the desired fan speed.

**Turning Fan Off:** To turn the fan off, turn the switch from the current fan speed setting to the OFF position. Remove plug from outlet.

### CARE and MAINTENANCE

#### CLEANING:

**WARNING:** Before cleaning the fan be sure to disconnect power cord from the plug. Clean the grille surface with a clean damp cloth. Do not use harsh chemical or abrasive cleaners.

**WARNING: DO NOT IMMERSE THE FAN OR ANY WIRES IN WATER.**

Replace front grille before fan use and allow fan to dry completely before use. Periodic grille cleaning with a vacuum will prevent dust build up. The motor is sealed and does not require any interior maintenance, cleaning or lubrication.

#### MAINTENANCE:

The Internal motor bearings are permanently lubricated at the factory and do not require any additional lubrication.

## MAINTENANCE&TROUBLESHOOTING

### REPAIR:

**WARNING: DO NOT OPERATE THE FAN WITHOUT THE GRILLE IN PLACE. DO NOT USE THE FAN IF IT HAS MALFUNCTIONED OR BECOME DAMAGED IN ANY WAY.**

### STORAGE:

Keep original carton for storage of the fan. Coil and tie the power cord to avoid damage during storage.

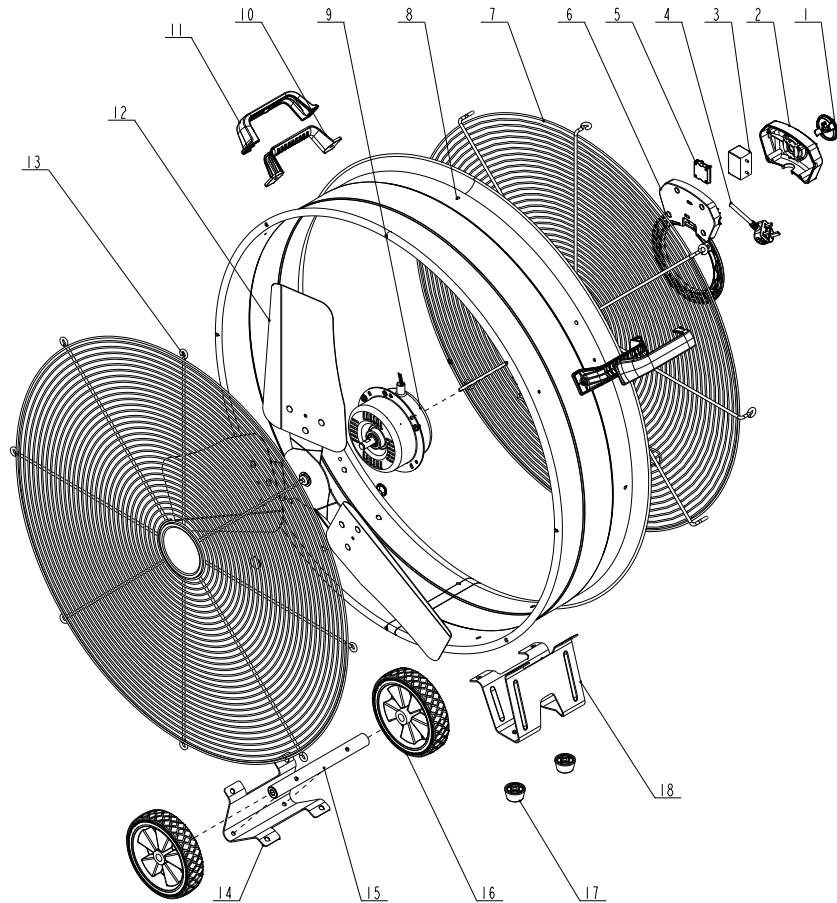
### TROUBLESHOOTING

**WARNING:** TO REDUCE THE RISK OF INJURY FROM MOVING PARTS AND/OR ELECTRIC SHOCK, TURN POWER SWITCH OFF AND DISCONNECT GROUNDED PLUG FROM ELECTRICAL OUTLET BEFORE PERFORMING TROUBLESHOOTING CHECKS.

Minor problems often can be fixed without calling customer service.

PROBLEM	CAUSE	SOLUTION
The motor does not run.	1. No power to unit. 2. Switch not on.	1. Plug unit in. 2. Place in "ON" position.
Unit is not rotating.	1. Obstructions are keeping the fan from working.	1. Check for obstructions. If you turn the fan off. Unplug the fan and carefully remove the obstruction. Plug the fan in and turn it on again by referring to the operating instructions.
Unit runs but the fan makes loud scraping noise.	1. Unit has been severely jolted causing fan blade to rub against housing or housing to deform.	1. Contact customer service.
Unit runs but vibrates excessively.	1. Dirt build up on fan blade. 2. Severe jolt has bent motor shaft.	1. Contact customer service.

## EXPLODED VIEW



## PARTS LIST

ITEM	PART	DESCRIPTION	QTY
1	910163	Knob switch	1
2	910239	Front switch housing	1
3	910164	Capacitor	1
4	910165	Power cord	1
5	910166	Switch	1
6	910240	Rear switch housing	1
7	910241	Rear grille	1
8	910242	Drum	1
9	910167	Motor	1
10	910168	Bottom handle	2
11	910169	Top handle	2
12	910170	Blade	1
13	910243	Front grille	1
14	910244	Rear holder	1
15	910245	Wheels axle	1
16	910171	Wheels	2
17	910172	Foot	2
18	910246	Front holder	1

**SGS Engineering (UK) Ltd  
1 Year Limited Warranty**

This warranty covers any defects in materials or workmanship of the enclosed product. SGS Engineering (UK) Ltd will replace any defective materials due to the craftsmanship of the product. This warranty does not cover any problem caused by misuse, abuse, accidents, or acts of God, such as floods or hurricanes. Consequential and incidental damages are not covered under this warranty. Coverage terminates if you sell or otherwise transfer the ownership. If you feel you have a defective product, please return it to the store where you acquired it along with a copy of your receipt.

Address: Unit 1, West Side Park, Belmore Way,  
Derby, DE21 7AZ, United Kingdom.

Telephone: 01332576850;

Support email: [support@sgs-engineering.com](mailto:support@sgs-engineering.com)

We will inspect the product and contact you within 72 business hours to give you the results of our inspection, we reserve the right to replace the product at our discretion. However; we may replace the product with one of the similar but not exact features.

This warranty gives you specific legal rights. You may have other rights that vary from country to country.



SGS Engineering (UK) Ltd  
West Side Park  
Raynesway  
Derby, DE21 7AZ

## EC Declaration of Conformity

**This is an important document and should be retained**

MANUFACTURER'S NAME: SGS Engineering (UK) Ltd

TYPE OF EQUIPMENT: HIGH VELOCITY DRUM FAN

PART NUMBER: SDF76/F307627D

APPLICATION OF EC COUNCIL DIRECTIVES / STANDARD:

EN 60335-2-80:2003 + A1:2004 + A2:2009

EN 60335-1: 2012 + A11: 2014 + A13:2017 + A1: 2019 + A14:2019 + A2:2019 +  
A15:2021 + A16:2023

EN 62233:2008

I, the undersigned, hereby declare that the equipment specified above conforms to the above European Communities Directive(s) and Standard(s).

PLACE: Derby, UK

DATE: 28th FEB 2025

A handwritten signature in black ink, appearing to read 'Neil Sansom', written over a horizontal line.

(Signature)  
Neil Sansom,  
Company Chief Executive Officer

